

**ELOprofessional 12**  
Software for Enterprise Content Management



# ELOprofessional 12

Software for Enterprise Content Management



**WORKFLOW/** starten

Zusammenarbeit, Analyse, Datenschutz

Digitalisierung leicht gemacht mit der ELO ECM Suite,  
the zentralen System für alle Unternehmensprozesse



Digitization and automation

# Your foundation for digital business

Digitize, automate, and analyze processes and information – **ELO**professional 12 leads your business into the digital future.



## Intelligent inbox

# Automate right from the start

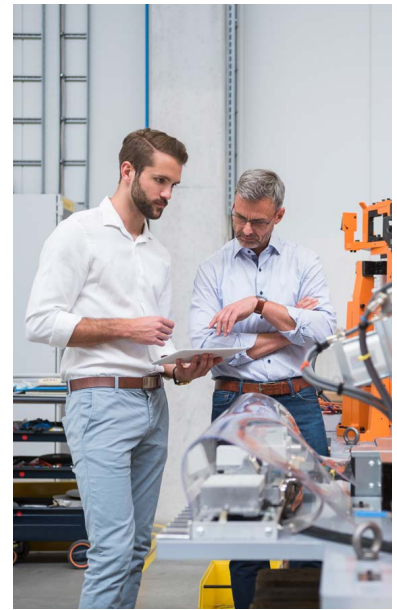
With **ELOprofessional12**, you can digitize and classify incoming documents, no matter the format or input channel, and forward them to a downstream business process. **ELOprofessional12** provides the perfect digital medium for handling daily tasks such as signing off invoices, submitting offers, or processing orders.

Our intelligent modules and interfaces accelerate incoming document processing according to your requirements: **ELO DocXtractor** automatically classifies incoming invoices and compares the invoice data with the information stored in your ERP system. The **ELO Barcode** module processes documents automatically, assigning them to the correct folder based on the retrieved barcode information.

### Digitize your mailroom

- > Digitize incoming documents and replace manual tasks with automated processes
- > You decide how much you want to automate
- > Use a combination of additional modules and interfaces to further streamline processes

**For more information, go to:**  
[www.elo.com/en/mailroom](http://www.elo.com/en/mailroom)



With **ELOprofessional 12**, you can complete workflow tasks even while out of the office.

## ELO workflow

# Accelerate your processes

Agile processes are a key factor in saving time and money and, ultimately, running a successful business. Companies need to automate certain tasks so that documents and information get to where they are needed — fast. This is where the **ELO Workflow** comes into play: It provides the framework for building workflows to automate and replicate internal procedures and processes so that you can streamline repetitive, manual tasks, make informed decisions, and approve requests quickly.

**ELOprofessional 12** has a built-in form designer that provides multiple options for integrating your own scripts. In combination with the ability to incorporate server-side processing rules, the **ELO Workflow** is the ideal tool for automating your business processes. Once you have triggered a workflow, you can view the status of a process any time thanks to numerous analysis and visualization options.

### Automate your business

- > Automate processes according to your needs
- > Track decisions and establish accountability
- > Multiple options for analyzing processes

For more information, go to:  
[www.elo.com/en/workflow](http://www.elo.com/en/workflow)



## ELO Analytics

# Your business metrics in one place

To succeed in today's business world, you need real-time actionable data with facts and figures at your fingertips. The **ELO Analytics** component integrated in **ELOprofessional 12** enables you to connect data from different sources within your ELO system to maintain a clear picture of your company's performance.

The highly versatile tool lets you build and configure different data views so that you can analyze and use information to suit your purposes. It takes just a few clicks to create custom dashboards for invoice ledgers, contract management reports, personnel files, and much more, all the while ensuring strong security for sensitive information. The best-in-class ELO permissions system guarantees that users are only able to view and edit documents and data that they are authorized to access.

### One-click data analysis

- > Customizable options for analyzing data from your ELO system
- > Visualize data with the help of diagrams, tag clouds, or metrics
- > Dashboard auto-refresh function

For more information, go to:  
[www.elo.com/en/analytics](http://www.elo.com/en/analytics)

## ELO e-mail management

# Total e-mail control

Storing e-mails according to retention policies poses a challenge for every company. There are two important factors to consider: statutory retention periods for business-related documents and personal data protection. With **ELOprofessional 12** and the e-mail management solutions **ELOxc for Microsoft EWS** and **ELO for IBM Notes**, your business is well equipped to overcome this challenge.


**ELOprofessional 12** offers e-mail archiving for long-term storage and automatically saves e-mail messages to the folders you specify, making e-mail management an integral part of your company's ECM strategy. Thanks to automated, rule-based and server-based e-mail archiving, you maintain a complete and accurate audit trail for all correspondence and are compliant with data protection regulations such as **GDPR**.

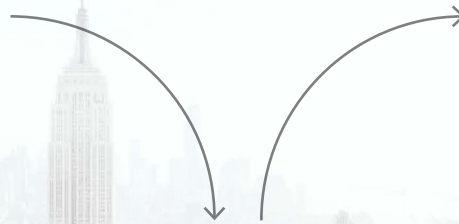
## Harness the potential of information in e-mails

- > Integrate e-mails in business processes
- > Automate e-mail archiving with retention policies
- > Seamlessly integrate with Microsoft Outlook and IBM Notes

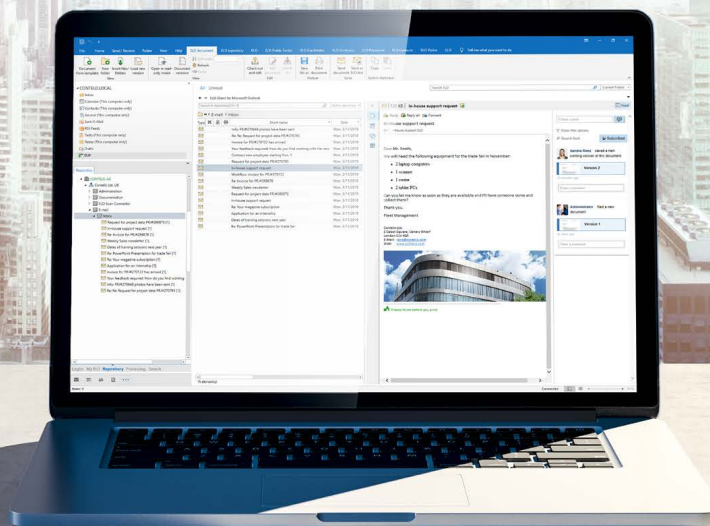
For more information, go to:  
[www.elo.com/en/e-mail](http://www.elo.com/en/e-mail)



 Different file and document formats



- Long-term archiving
- Automation
- transparency
- Compliance
- Rule-based









ECM highlights

# The foundation for your success

**ELO**professional 12 helps you build the foundation for growing your business with efficient digital information management, maximum data security, and flexible, compliant workflow control.

## Collaboration with ELO

# Make collaboration happen on all levels

Effective teamwork and collaboration among employees, service providers, and customers are the cornerstones of any successful business. **ELOprofessional12** offers tools that empower employees to effectively engage on projects.

With **ELO Teamrooms**, **ELOprofessional12** offers a universal platform for employees and external stakeholders to work on joint projects and much more. **ELO Teamrooms** can be accessed in a browser-based Teamroom Client, allowing users who are not part of the **ELO** system to contribute.

**ELO Teamroom** enables employees to easily collaborate with geographically dispersed colleagues, customers, and service providers – all of whom can edit Microsoft Office documents or other files stored in **ELO**. Another feature is the moderator function, which allows the inclusion of contributors to a virtual project room at any time.



### Optimize collaboration

- > Create virtual project rooms
- > Collaborate on documents
- > Easily access via a web browser

#### Learn more:

[www.elo.com/en/teamroom](http://www.elo.com/en/teamroom)



**More efficient teamwork**

- > Exchange information within the ELO repository
- > See who has made changes to documents
- > My ELO gives you important information at a glance

**For more information, go to:**  
[www.elo.com/en/collaboration](http://www.elo.com/en/collaboration)

The **ELO Feed** provides a platform for exchanging information about documents. In ELO or **ELO Teamrooms**, employees can use the feed to discuss project details, collaborate on documents in real time, or involve other colleagues on a particular idea or process.

The tool also enables users to carry out polls and link additional documents as well as add hashtags to categorize documents under a specific topic.

My ELO is a personalized information hub that offers each user an at-a-glance view of upcoming tasks, new posts in the **ELO feed**, or recently used documents — ELO is simply a great way to stay organized.

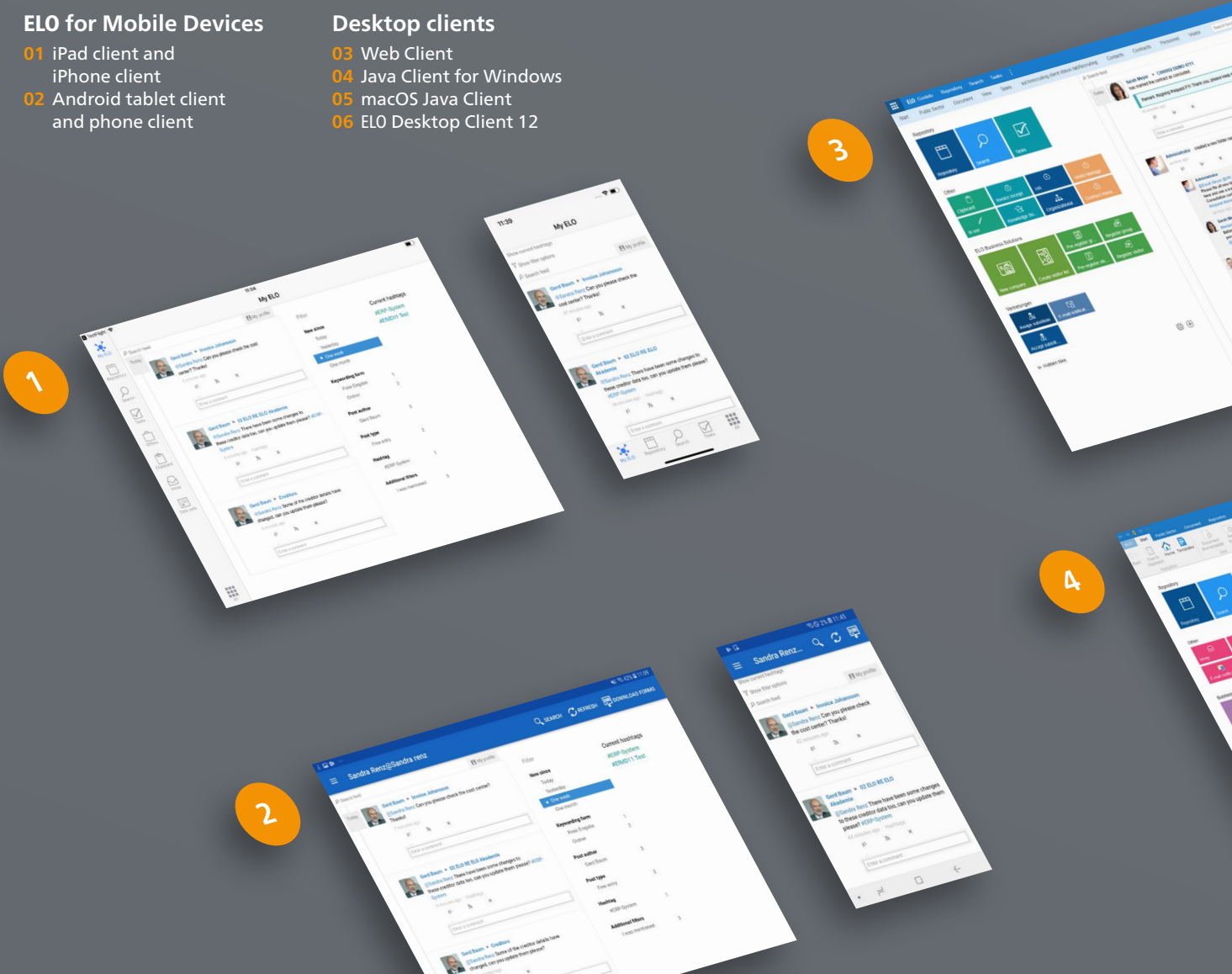
### A range of ELO clients to meet all needs

#### ELO for Mobile Devices

- 01 iPad client and iPhone client
- 02 Android tablet client and phone client

#### Desktop clients

- 03 Web Client
- 04 Java Client for Windows
- 05 macOS Java Client
- 06 ELO Desktop Client 12

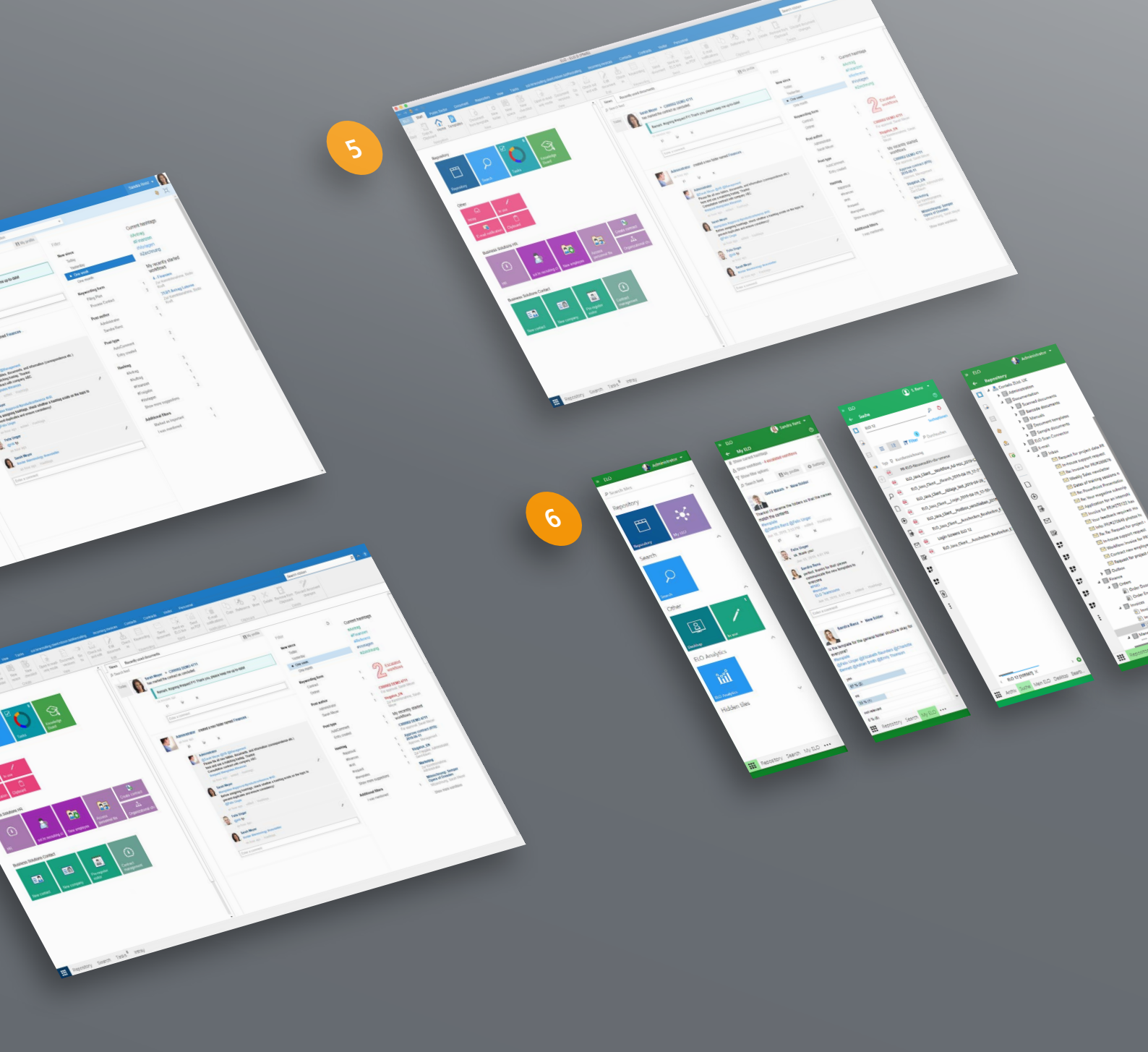


#### ELO clients

# Flexibility for your business

The option to work on different devices and across multiple platforms has become the norm for most companies. ELO's multi-client strategy supports this approach: Not only have we developed a range of clients for different operating systems, but the **ELO Web Client**, which supports all popular browsers and mobile platforms, provides a flexible option for accessing data.

You benefit from the entire portfolio of ECM functions and components in all clients. The easy-to-navigate



menu structure ensures you will find your way around functions such as the workflow or the ELO Feed without any issues – no matter which ELO client you are using.

**ELOprofessional12** enhances your usual workspace with a wide range of ECM functions on the spot. The new **ELO DMS Desktop** provides ELO functions integrated in Microsoft Windows: **ELO Desktop Client 12** is displayed as a sidebar in your Windows desktop and is optimized for working with Microsoft

Office documents. Transfer files from Microsoft Word, Excel or PowerPoint, as well as all other document types, to your ELO repository with a single click.

Among new version features – the **ELO Integration Client**, which integrates ECM functionalities directly into popular business applications such as SAP Business One, Microsoft Dynamics NAV, and Salesforce – simplifying your day-to-day work.



**ELO for Mobile Devices** keeps you connected to your data and colleagues – wherever you are.

Mobile working with ELO

# Mobile solutions offer new opportunities

Mobile productivity is fundamental in today's workplace. **ELOprofessional 12** provides all the tools needed to work from any place, at any time, on any device.

Thanks to our smartphone and tablet apps **ELO for Mobile Devices**, **ELO QuickScan**, and **ELO Connect**, users have access to all the ECM functions they need to do their jobs effectively. No matter whether you are working from home, on the train, on the way to a meeting, or need to transfer documents to the ELO repository with your smartphone camera — mobile solutions with **ELOprofessional12** provide maximum flexibility.

**The ELO ECM apps for iOS and Android**

- > ELO for Mobile Devices
- > ELO QuickScan (iOS)
- > ELO Connect (Android)

**For more information, go to:**  
[www.elo.com/en/mobility](http://www.elo.com/en/mobility)

## ELO iSearch

# Don't search, find

The ELO iSearch module integrated in **ELOprofessional 12** lets you find important business information and documents in an instant, saving you time and resources. **ELO iSearch** searches your entire ELO repository as well as integrated third-party applications such as ERP, CRM, and e-mail systems. This greatly improves the quality of the search results that are returned, giving you the correct information in the right context.

**ELO iSearch** features numerous functions to help you find the information you need even faster, such as a range of intelligent filters for narrowing down possible matches. And, as soon as you start to type a search term, **ELO iSearch** automatically displays suggestions related to the search term you entered as well as synonyms.

The search function in **ELOprofessional 12** not only looks up the metadata or keywording information, but also searches the full text contents of the actual document.

**ELOprofessional 12** presents you with the most relevant information at a glance, so you can focus on your core business.

**For more information, go to:**  
[www.elo.com/en/iSearch](http://www.elo.com/en/iSearch)



### Other state-of-the-art ECM functions

- > Document storage in line with retention policies
- > Version control and version history
- > ELO permissions
- > Automation with server-side processing rules
- > Document check-in and checkout
- > Customizable notes and stamps
- > Easy document exchange with ELO links
- > Duplicate check to prevent redundant data
- > Workflow functionality for automated processes
- ... and much more!







Security and data protection

# Your data is in safe hands

Function-rich, **ELO**professional 12 equips you to meet statutory obligations for document retention and comply with the latest data protection regulations.



GDPR



Accounting principles



Compliance



## Compliance

# Get data security right

Data security and privacy are increasingly integral parts of the information policy landscape. When it comes to storing important or sensitive data and business documents, **ELOprofessional 12** offers the necessary platforms and tools to ensure that you are able to meet statutory regulations. In addition, there are numerous ELO functionalities that enable you to implement internal compliance guidelines quickly, transparently, and securely.

The solution incorporates a range of basic functions, such as version control, logs, permissions, and sophisticated encryption technology with up to 2 million possible encryption keys, which help you meet legislative criteria for storing data and documents. These built-in functions, easily configured to meet your requirements, lay the groundwork for successful compliance.

### Data security with ELOprofessional 12

- > Safeguard against data loss
- > Audit trail of changes and non-modifiable version history
- > Compliance with and monitoring of retention obligation and deadlines
- > Permanently accessible documents

For further information, go to:  
[www.elo.com/en/compliance](http://www.elo.com/en/compliance)



### Manage data protection with ELOprofessional 12

- > Set permissions to prevent unauthorized access
- > Encrypt sensitive data
- > Keep a log of data access
- > Mark personal data manually or automatically
- > Erase data after a specific time period or event
- > Document the associated processes
- > Separate data into what is personally identifiable and what is not
- > Form database for processing activities

## Secure your data with ELO

# Handle personal data efficiently

The demand for businesses to protect users' personal data has become a central concern for companies across all industries, especially since the European Union's General Data Protection Regulation (**GDPR**) came into effect. Those companies that can ensure the safety of their users' personal data will be one step ahead of the competition.

The standard software package already comes with a wide range of functions to enable companies and data protection officers to implement regulatory requirements, such as assigning permissions to prevent unauthorized employees from accessing data. In addition, **ELOprofessional12** lets you easily tag data as personal and delete it after a certain amount of time according to the limits specified under **GDPR**.



With just a single click in **ELOprofessional 12** you can protect your employees' personal data.





Breaking information barriers

# Seamless integration with your processes

Enable information to travel easily among systems with numerous modules and interfaces that blend perfectly with your existing IT infrastructure.

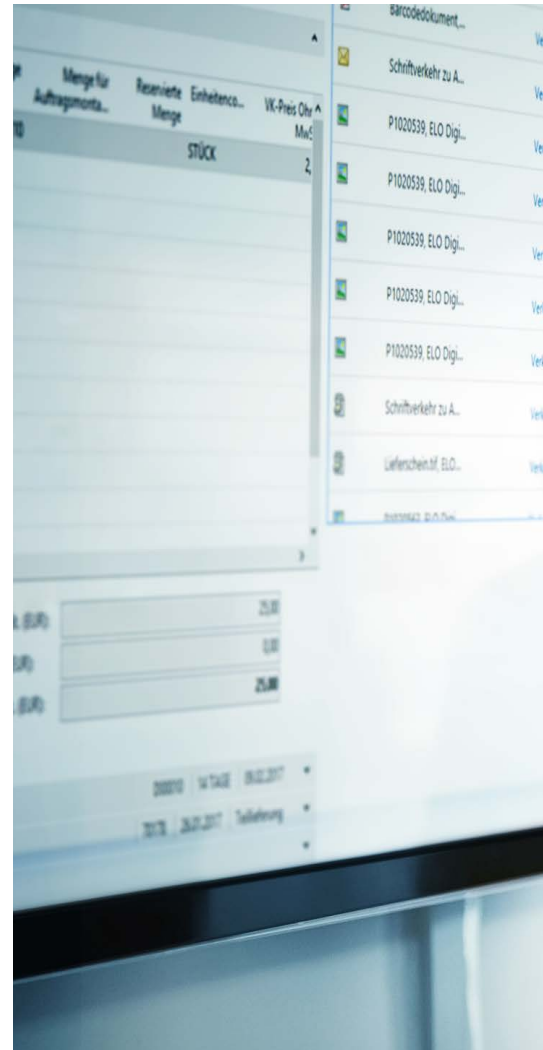
## Connect processes across systems

# Let integration work for you

**ELO ECM Suite 12** extracts data from different sources and feeds it into a central information hub. Among new version features – the **ELO Integration Client**, which integrates ERP and CRM systems such as SAP Business One®, Microsoft Dynamics NAV, Salesforce, and more. These integration capabilities allow you to benefit from the many advantages an ECM system offers without leaving your usual work environment. **ELOprofessional12** lays the foundation for connecting your IT systems, the key to your company's success.

The upgraded **ELO for SAP® ERP** interface ensures perfect integration with **ELOprofessional12**: Documents created by SAP® systems or filed via an SAP object can be transferred straight to your ELO system without switching programs. Additional SAP integration tools that drive efficiency across systems include **ELO Toolbox for SAP® ERP** and **ELO Indexdownload for SAP® ERP**.

Make **ELOprofessional12** and the wide range of adaptable modules and interfaces the ECM system of choice for your organization.



### Your one-stop information platform – ELOprofessional 12

- > Seamlessly integrate different software systems and components
- > Easily multitask across systems
- > Create holistic views by combining business information

For more information, go to:  
[www.elo.com/en/integration](http://www.elo.com/en/integration)





## Modules, interfaces, and mobile apps

### **ELO Backup Server**

- › Long-term storage of documents the easy way

### **ELO Barcode module**

- › Automatically keyword, index, and archive documents with barcode scanning

### **ELO Business Logic Provider (BLP)**

- › Intelligent middleware for connecting processes

### **ELO COLD**

- › Fully automated bulk import of printer output and spool data

### **ELO Connect (Android)**

- › Transfer documents from your smartphone to the ELO repository

### **ELO DocXtractor (DocX)**

- › Intelligent, automated analysis and processing of inbound documents

### **ELO for Mobile Devices**

- › Stay connected, any place, any time

### **ELO Notebook Client**

- › Knowledge at your fingertips

### **ELO Notes Server (SAND)**

- › Advanced e-mail management for IBM Notes

### **ELO QuickScan (iOS)**

- › Scan documents with your smartphone and file them to ELO

### **ELO Replication**

- › Automatic data comparison between multiple locations

### **ELO for SAP® ERP**

- › An entire suite of solutions for integrating ELO with SAP environments

### **ELO for SharePoint**

- › Two systems – one world

### **ELO XML Import**

- › Import bulk data the fast way

Find out what our additional modules can do and configure **ELOprofessional12** to match your business needs:

[www.elo.com/en/modules-and-interfaces](http://www.elo.com/en/modules-and-interfaces)







ELO Business Solutions

# Application-specific solutions

Your everyday processes are at the heart of our offering: Get to know the extensive portfolio of **ELO Business Solutions**.

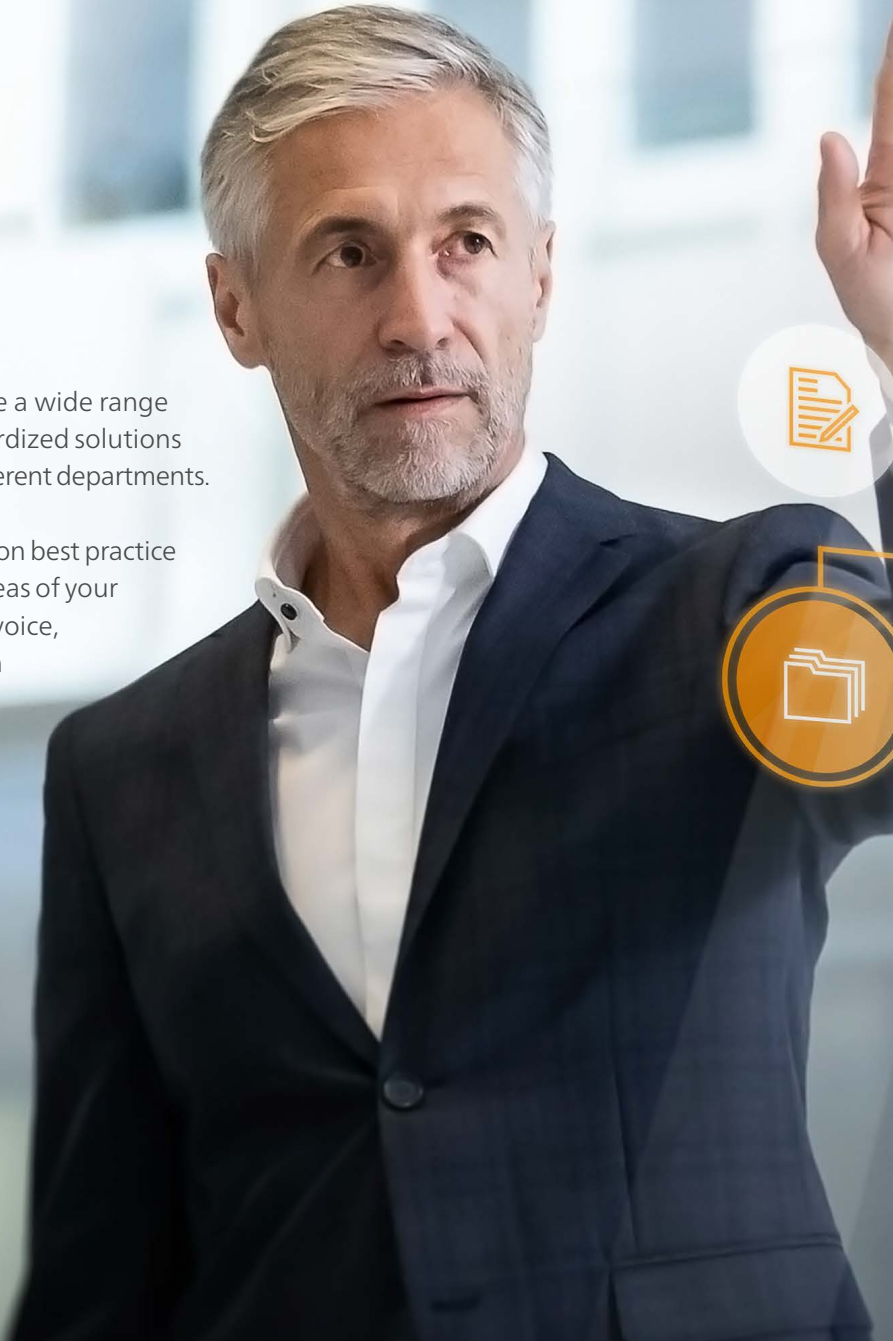
## ELO Business Solutions in practice

# Digitization strategies for every day

Companies looking to digitize end-to-end face a wide range of challenges. Help is at hand thanks to standardized solutions that you can implement quickly and easily in different departments.

Our tailored **ELO Business Solutions** are based on best practice approaches allowing you to digitize specific areas of your company. Trust in ELO to optimize your HR, invoice, and contract management processes, and much more.

Our range of out-of-box solutions can be adapted to meet individual requirements, ideally complementing the **ELO professional** platform and enabling you to digitize your business.



### Hire the best possible candidates with ELO HR Recruiting

- > Automated recruitment process
- > Easily transfer candidate data
- > Extensive ranking system
- > Compliance with statutory obligations for archiving documents

For more information, go to:  
[www.elo.com/en/recruiting](http://www.elo.com/en/recruiting)



**Every day, your company can benefit from our out-of-the-box, best practice ECM solutions – from the front desk to accounting to HR. Here’s an example of how ELO Business Solutions can streamline your operations.**

A team leader wants to post a new position and consults with the company **ELO Knowledge** community to learn about the current recruitment process. The knowledge database provides instruction to simply click the “Submit personnel request” button in ELO. This action triggers the digital recruitment process in **ELO HR Recruiting**.

The team leader’s supervisor approves the request, forwarding it to the HR department. Once approved, a posting is created and the position is uploaded to linked job portals.

Applications to the posted position are now received online and processed with **ELO HR Recruiting**. Once the relevant documents have been reviewed, the team leader and supervisor decide to invite their preferred candidate for an interview. **ELO HR Recruiting** offers customizable e-mail templates for candi-

### Modern knowledge management with ELO Knowledge

- > Share knowledge company-wide
- > Collaborate to advance ideas
- > Quickly find information
- > Build a central knowledge portal
- > Empower employees

**For more information, go to:**  
[www.elo.com/en/knowledge](http://www.elo.com/en/knowledge)

date correspondence, allowing interviews to be quickly and professionally scheduled.

On the day of the interview, the candidate is greeted on a welcome screen in the lobby, with **ELO Visitor** making for a positive and professional first impression. Employees at the front desk are prepared for the appointment, issuing the candidate a personalized visitor badge on arrival.

Following an excellent interview and after analyzing the results, the team leader and supervisor decide to hire the candidate. The application process is completed in **ELO HR Recruiting** and HR starts a custom onboarding process. Thanks to **ELO HR Personnel File**, the candidate data can be transferred straight to a digital personnel file containing

### Welcome to the digital future with ELO Visitor

- > Coordinate visits easily
- > Personal welcome
- > Personalized visitor badges
- > Up-to-date visitor lists
- > Ensure data privacy

**For more information, go to:**  
[www.elo.com/en/visitor](http://www.elo.com/en/visitor)



### Keep an eye on the fine print with ELO Contract

- > Contract governance and evaluation options
- > Manage contract data in one location
- > Practical integrated calendar
- > Digital contract files
- > Compliant contract management

For more information, go to: [www.elo.com/en/contract](http://www.elo.com/en/contract)

contract file is linked to the digital personnel file, making all employee information available in one location at all times.

In addition to a company cell phone, the new employee also receives a laptop ordered by the IT department. Invoices received in accounting are then automatically processed with **ELO Invoice**. From capture to approval, the entire invoice process is ultra-efficient.

Onboarding new hires as quickly as possible requires them to complete a range of training programs. As most of the sessions are available in e-learning

all HR-related documents, regardless of their format – including the new employee’s contract.

**ELO Contract** not only creates the contract, but also manages it digitally over its lifetime. From the end of the probationary period, to upcoming anniversaries, to

retirement – with **ELO Contract** you can keep an eye on all contract-related dates. And that’s not all – **ELO Contract** manages much more than just employment contracts – it handles all other contracts in a central file, from leasing agreements to company cell phone contracts. In **ELO**, the



### Redefining HR processes with ELO HR Personnel File

- > Capture and securely manage HR data
- > Access organizational charts at the press of a button
- > Analyze processes
- > Integrate with existing HR systems
- > Meet deadlines and ensure legislative compliance

For more information, go to: [www.elo.com/en/personnel-file](http://www.elo.com/en/personnel-file)

### ELO Invoice – innovative accounting pays off

- > Automated invoice processing
- > Seamless integration with your ERP system
- > Manage incoming invoices and monitor deadlines
- > Straightforward invoice forms



For more information, go to:  
[www.elo.com/en/invoice](http://www.elo.com/en/invoice)

modules, **ELO Learning** was developed to efficiently manage training content. Supervisors have an overview of what sessions employees have completed as well as their progress – this is 21<sup>st</sup> century learning management.

At the end of the day, the entire company benefits: The team leader from accounting is pleased with the new hire, who has quickly learned the company ropes all thanks to an end-to-end digital workplace. You and your employees can focus on your core

business – while **ELO Business Solutions**, a complement to **ELOprofessional**, streamline your processes.



### The future of training with ELO Learning

- > Digitally manage content
- > Optimize training management
- > Seamlessly integrate with HR solutions
- > Capitalize on social learning advancements

For further information, go to:  
[www.elo.com/en/learning](http://www.elo.com/en/learning)

Additional information

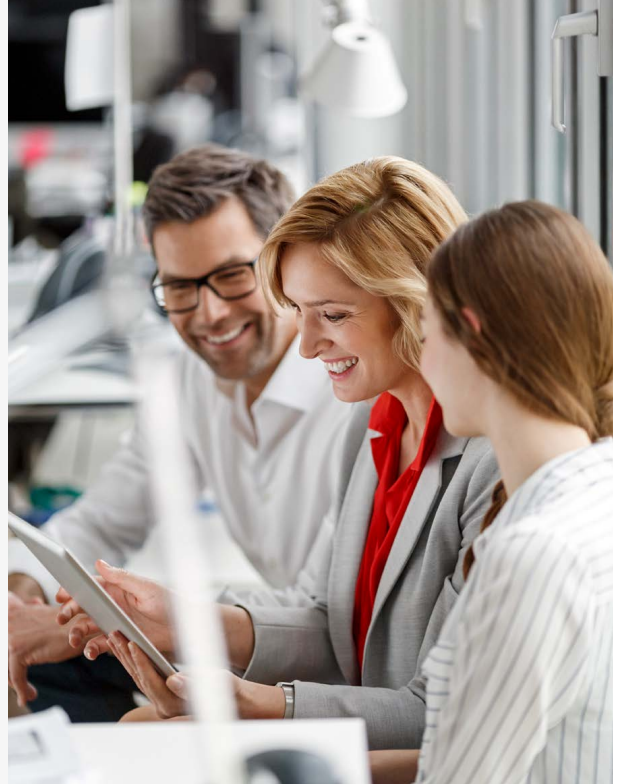
# Get to know ELO



## Find the partner that meets your requirements

There are more than 1000 certified ELO Business Partners worldwide, giving you the assurance of a competent, trusted partner, wherever you are.

[www.elo.com/en/partnerfinder](http://www.elo.com/en/partnerfinder)



## With ELO webinars, it's easy to keep up to date

Take advantage of our free webinars and find out everything you need to know about document management and enterprise content management with ELO.

[www.elo.com/en/webinars](http://www.elo.com/en/webinars)

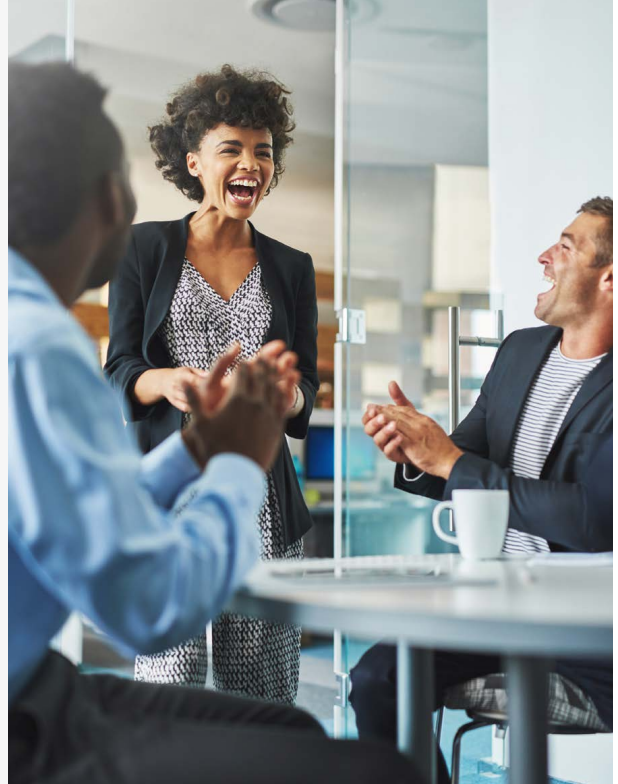




## Our customers, their success stories

Companies of all sizes and industries already run better thanks to ELO products and solutions. Read how our customers successfully use ELO to optimize their business.

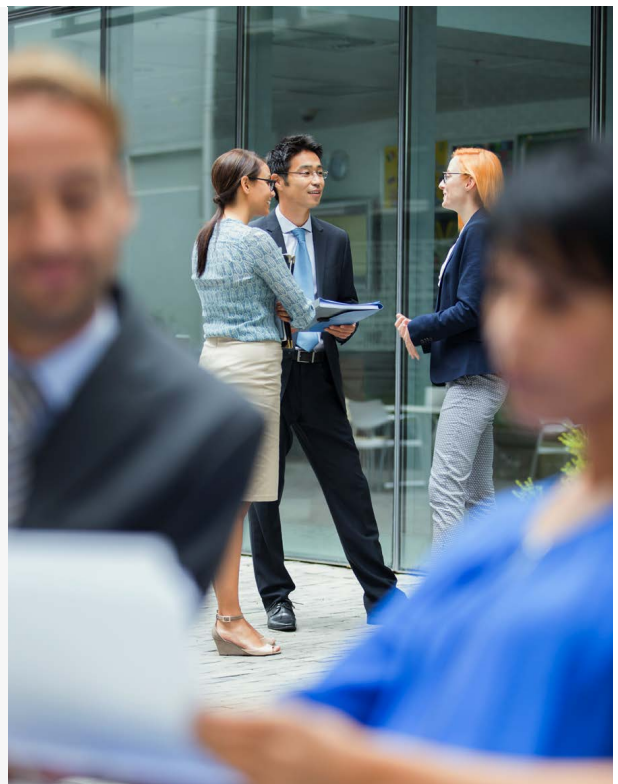
[www.elo.com/en/referencefinder](http://www.elo.com/en/referencefinder)



## Experience ELO live at numerous events

We take part in a large number of national and international trade fairs and events. Plus, we organize our own events, such as the **ELO ECM Tour**, the **ELO ECM Conference** – and many more – we look forward to seeing you join us!

[www.elo.com/en/events](http://www.elo.com/en/events)



# ELOprofessional 12

Software for Enterprise Content Management

ELO® is available from:

┌

└

┌

└

#### European headquarters

ELO Digital Office GmbH  
Tübinger Strasse 43  
70178 Stuttgart, Germany  
info@elo.com

#### North America

ELO Digital Office Corporation  
50 Milk Street, 16th floor  
Boston MA 02109, USA  
info-usa@elo.com

#### Asia-Pacific

ELO Digital Office AU/NZ Pty Ltd  
Level 7, 146 Arthur St  
North Sydney NSW 2060, Australia  
info@elodigital.com.au

#### Asia

PT ELO Digital Office Indonesia  
AKR Tower (Gallery West), 16 A Floor  
Jl. Panjang No.5 Kebon Jeruk  
Jakarta Barat 11530, Indonesia  
marketing@elo.co.id



For more information, go to:  
[www.elo.com/en/eloprofessional](http://www.elo.com/en/eloprofessional)

ELO®, ELOprofessional®, ELOenterprise®, ELOoffice®, and ELO ECM Suite® are registered trademarks of ELO Digital Office GmbH in Germany and/or other countries. SAP®, SAP NetWeaver®, and SAP S/4HANA® are registered trademarks of SAP and their respective companies in Germany and/or other countries. Microsoft®, Windows®, Excel®, PowerPoint®, and SharePoint® are registered trademarks of Microsoft Corporation in the USA and/or other countries. Other company, product, or service names may be trademarks of other companies. This publication serves only as non-binding general information and is not a substitute for a detailed, individual consultation. ELO reserves the right to change information in this publication at any time without prior notification. Technical characteristics and functions may vary, particularly from country to country. You can obtain the latest information on ELO® software products, contract terms, and prices from the ELO® companies, ELO® Business Partners, and/or ELO® Channel Partners. The product information reflects the current status. The subject and extent of the services are exclusively defined in the respective contracts. ELO® does not guarantee, warrant, or assure as specific properties that its products or other services provide compliance with specific laws or regulations. The customer is responsible for the adherence to security regulations and other standards of national and international law. We reserve the right to make changes and assume no liability for errors and misprints. Reproduction and/or distribution, in part or in whole, is only allowed with written consent from ELO Digital Office GmbH. © Copyright ELO Digital Office GmbH 2019. All rights reserved | Article no. A012-PP-EN | 20190913

